



Hillrom™

Welch Allyn® PanOptic™ Ophthalmoscopes

EXPAND YOUR VIEW

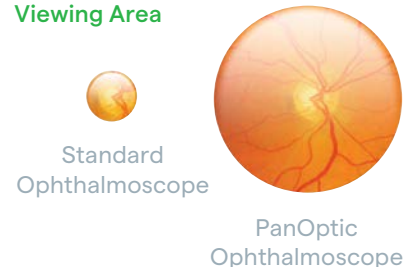
Our Welch Allyn PanOptic and PanOptic Plus Ophthalmoscopes offer a brighter, wider view. Enhance eye exams with the PanOptic Plus, featuring QuickEye™ alignment technology that supports better alignment to the optic disc, a common challenge with eye exams. Both devices work on existing Welch Allyn 3.5 V power sources.

Quick Eye alignment features two indicator lights that help you direct the patient's gaze for better optic disc alignment.



Specifications	PanOptic Plus Ophthalmoscope	PanOptic Basic Ophthalmoscope
Model Number	118-3	118-2
QuickEye™ Alignment Technology	Yes	No
Warranty	5 years	1 year
Height x Width x Depth	8 cm x 4.5 cm x 7.5 cm	
Weight	130 g	
Apertures	Small, Large, Red Free, Slit, Fixation target, Cobalt Blue	
Diopter Range	-20 to +25 D	
Diopter Steps	-20, -15, -12, -10, -9, -8, -7, -6, -5, -4, -3, -2, -1, 0, 1, 2, 3, 4, 5, 6, 7, 8, 9, 10, 12, 15, 20, 25	
Crossed-linear Polarizers	Yes	
Lamp Type and Warranty	SureColor™ LED, 7 year warranty	
Color	Color rendering index (CRI): 95 typical; R9: 85 typical; Color temperature: 2700K - 3500K	
Lamp Life	80+ years ¹ (typical)	
Field of view	20°	

20X LARGER
Viewing Area



Standard
Ophthalmoscope

PanOptic
Ophthalmoscope

Specifications	Welch Allyn® Lithium Ion Plus Power Handle with USB Charger	Welch Allyn® Universal Desk Charger
Model Number	719-3	719-DSK
Height x Width X Depth	14 cm x 3 cm x 3 cm	10 cm x 19 cm x 11 cm
Weight	140 grams	1.2 kg
Compatibility	719-DSK Welch Allyn® Universal Desk Charger; 71140 chargers	71140, 719-3, 71910, 71670 handles. 12800 & 22800 used with 71249 Adapter Sleeve
Integrated Charging	USB-C	—
Warranty	Two years	One year
On-time	5.5 hours; Approximately 660 30-second exams	—
Battery Type	Lithium Ion	—
USB Quick-charge time (0-75%)	90 minutes	—
Power Cord and Cord Options	719-USB	#18 AWG, 3-wire grounded cord, 6 feet long medical grade detachable with IEC60320 inlet
Input	—	100-240V, 50-60 Hz, 100mA max, Class I, Continuous Operation
Output	—	2.4V - 4.0V DC 80mA max

PANOPTIC ACCESSORIES

118-EC

Reusable Eyecup (set of five)

777-LH

3.5 V Head Locking Hardware with setscrews



For more information, please contact your Hillrom representative or visit hillrom.com.

hillrom.com

Hill-Rom reserves the right to make changes without notice in design, specifications and models. The only warranty Hill-Rom makes is the express written warranty extended on the sale or rental of its products.

¹Assumes an average of 4 patient exams (both eyes) per day taking 15 seconds per eye for 200 days per year.

Intended Use Welch Allyn® PanOptic™ Plus Ophthalmoscope:

The Welch Allyn PanOptic ophthalmoscopes are intended to be used by clinicians and medically qualified personnel for examination of the retina, cornea, aqueous, lens and vitreous of the eye under illumination and magnification on pediatric and adult patients. The intended use environments for the Welch Allyn PanOptic ophthalmoscopes are professional healthcare facility environments such as general physician's offices, hospitals, specialist, urgent care, clinics, and clinical environment training. WARNING Patient injury risk. The light emitted from the ophthalmoscope is potentially hazardous. The longer the duration of exposure, the greater the risk of ocular damage. Exposure to light from this instrument when operated at maximum intensity will exceed the recommended maximum exposure (RME) of 2.2 J/cm², unless additional action is taken by the user to minimize exposure, after 30 min. The risk of retinal injury at an exposure of 2.2 J/cm² is not high, but because some patients may be more susceptible than others, caution is advised if this radiant exposure value is exceeded. However, because of a significant risk of injury at exposures exceeding 10 J/cm², the user should avoid exposures longer than 30 min.